



#### Locational Advantages of Active Business Park

Landmarks	Distance
J W Marriott Hotel	1.2 kms
ITC Sonar Hotel	1.5 kms
ITC Royal Bengal	1.5 kms
Sealdah Station	2.5 kms
Apollo Gleneagles	4 kms
Fortis Hospital	4 kms
Calcutta International School	4 kms
Park Street	4 kms
Vivanta	4 kms
Mani Square (Mall)	4 kms
Ruby Hospital	4 kms
Heritage School	5 kms
La Martiniere School	5 kms
Mahadevi Birla World Academy	5 kms
Medica Super Speciality Hospital	6 kms
Airport	18 kms

Tower Daffodil.  
The good life is calling the lucky few.





Why walk on floors when you can walk on clouds?

▶ Marble flooring

# Experience the finer details of world-class luxury



Synthetic grass surface football arena



ITF 4 Standard synthetic grass tennis court



Golf putting green with driving range



Cricket Arena



Walk Way



Children's Play Arena



Basketball Court



Swimming Pool with Jacuzzi & Kids' Pool



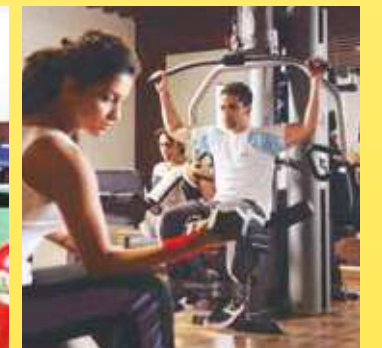
Squash



Badminton cum Banquet Hall



Billiards



Fully-equipped gym with steam rooms



Laminated Wooden Flooring ▲

◀ Basic Modular Kitchen



Video Door Phone ▼



Shower Partition ▼

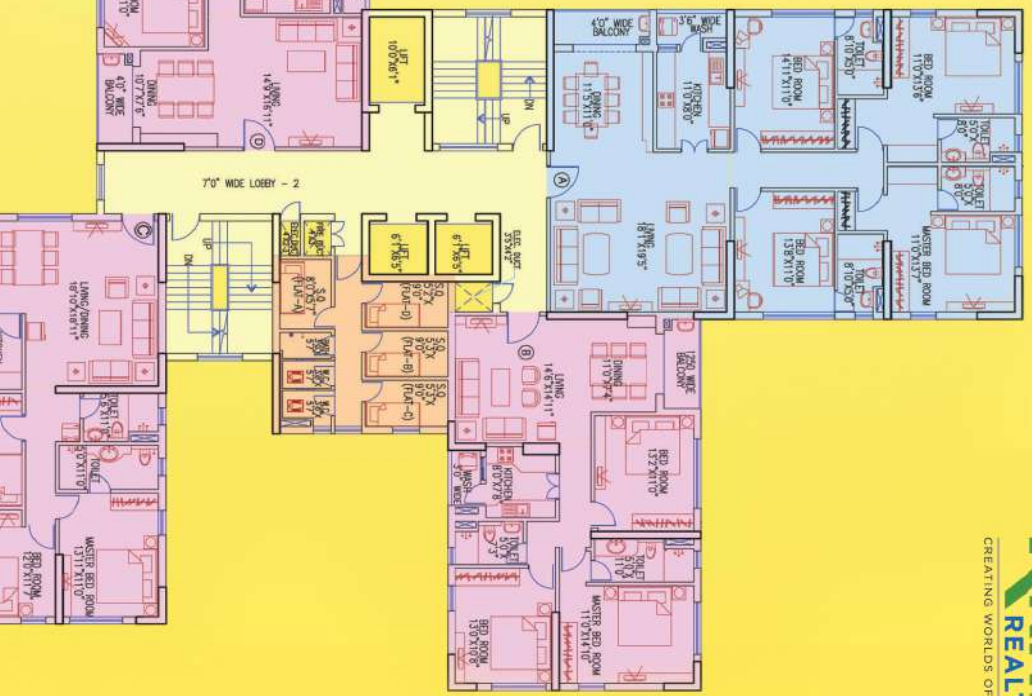
active acres

Not just living.  
Active living.



**DAFFODIL-TOWER 2**  
TYPICAL FLOOR PLAN  
(1ST. TO 21ST.)

FLAT	TYPE	CARPET AREA (IN SQ.FT.)
A	4 BHK	1604
B	3 BHK	1012
C	3 BHK	980
D	3 BHK	1098
E	4 BHK	1604
F	3 BHK	1098
G	3 BHK	980
H	3 BHK	1012



RRHL REALTY  
CREATING WORLDS OF JOY





## Live Young.

Active Acres is an amazing home where everybody wins. It has acres of playing greens with tennis court, football, cricket arena and whole fields of fun.

Enjoy better health, happiness and togetherness with every boundary you score or every lap you swim. Yes, life is young and happy, at Active Acres.





**INDOOR**

- Badminton
- Squash
- Lounge
- Banquet
- Coffee Shop
- Gym
- Steam Room
- Yoga / Aerobics
- Pool
- Billiards
- Table Tennis
- TV Room
- Library
- Creche
- Cards Room
- Board Games

**OUTDOOR**

- Swimming Pool
- Jacuzzi
- Kids' Pool
- Putting Green (Golf)
- Cricket, Football Arena
- Synthetic Grass Tennis Court
- Basketball Court
- Jogging Track
- Cycling Track
- Children's Play Area
- Amphitheatre



**Club Active:**

Now unwind and exult in the spacious surroundings of an elegant club. Club Active. The thrill of tennis; the soothing laps in the swimming pool; the camaraderie around the snooker table; or the physical challenge of squash. There are surplus amenities for the resident families which creates true privileged living.



## General Amenities



- Intercom facility for entire complex including Club & FMS
- Facility Management System
- 3 Tier Security
- CCTV at main gate & ground floor lobby
- High speed elevators in each tower
- AC entrance lobby
- Extensive landscaped parks and gardens spread over large open area
- Landscaped water body spread over 10,000 sq.ft.
- Fire alarm and suppression system
- Well-built and well-lit internal roads
- Temple
- 16.38 acres project • Over 80% open landscape area • Flat of 1671 sq.ft. - 5135 sq.ft. area
- 3/4 BHK apartments & penthouses

## Specifications

- 1. Structure** - RCC frame structure on pile foundation
- 2. Walls** - Conventional Brickwork with cement plastering
- 3. Wall Finish** - Interior: Putty finish/ Plaster of Paris  
- Exterior: Combination of textured paint/ Brush finish
- 4. Ceiling** - Putty finish/ Plaster of Paris
- 5. Flooring** - Marble in Drawing/ Dining  
- Bedrooms - Laminated wooden floor  
- Toilets - Anti-skid ceramic tiles  
- Lift Lobby - Vitrified tiles  
- Kitchen - Anti-skid ceramic tiles
- 6. Kitchen** - Basic Modular kitchen  
- Piped gas supply  
- 24x7 water supply  
- Hot / Cold water line
- 7. Toilet** - Standard ceramic tiles on the wall up to 7ft. height  
- Premium quality bathroom fittings & sanitary ware  
- CP fittings of premium quality  
- Shower partition in all bathrooms  
- Granite counter for basin  
- Concealed plumbing and pipe work  
- Provision for geyser  
- Hot / Cold water point
- 8. Doors** - Main Door - Solid molded & polished  
- Internal flush doors solid core with frames  
- Locks of superior quality  
- Hardware fitting of reputed brands
- 9. Windows** - Anodized aluminium windows
- 10. Electrical** - Video door phone  
- Provision for adequate light, fan and power points  
- Modular switches of superior brands  
- Overhead illumination for compound and street lighting inside the complex  
- ISI approved brand of concealed wiring for electricity, telephone and television  
- Fully AC ground floor lobby  
- 24X7 Power Back-up for essential services like lift, lobby, common area, apartments and general lighting
- 11. Facilities** - Closed circuit TV at the ground level  
- Automatic high-speed elevators of superior make  
- Intercom facility & infrastructure for DTH TV service  
- In-house sewerage treatment plant for entire complex  
- State-of-the-art fire fighting arrangement and extinguishers as required by law  
- Extensively landscaped garden and driveways  
- 24 Hours treated water supply