

General Amenities

01. Intercom facility for entire complex including Club & FMS
02. Facility Management System
03. 3 Tier Security
04. CCTV at main gate & ground floor lobby
05. High speed elevators in each tower
06. AC Entrance Lobby
07. Extensive landscaped parks and gardens spread over large open area
08. Landscape water body spread over 10,000 sq.ft.
09. Fire alarm and suppression system
10. Well-built and well lit internal roads
11. Temple
12. 16.38 acres project
13. Ramps for Senior Citizens
14. Stretcher Elevators in all Buildings
15. Cafe
16. Toddler's playroom
17. Card Room
18. AV Room
19. Business Centre



MARKETING & SITE OFFICE
54/10, Debendra Chandra Dey Road, Off E.M. Bypass,
Near ITC Sonar, Kolkata - 700015
T: +91 33 66066777 / 2329 6960 | F: +91 33 2329 6958
M: +91 97485 66662/3
www.activeacres.in | sales@rrhrealty.com

HIRA/P/KOL/2020/000778 || hira.wb.gov.in

angelica

TOWER



Ruchi REALTY
CREATING WORLDS OF JOY

active
acres

Not just living.
Active living.



CNBC AWAAZ
Real Estate Awards 2013

NDTV
Property Awards 2014

Homes with the *Midas touch*

Our flagship project Active Acres is proud to present you with our latest offering "Angelica", the premium residential tower in the multi-award winning project. We have worked hard to achieve the nearest semblance to your dream home. With Angelica, we focused on transforming simple living spaces into an epitome of liveliness, luxury and class. From the premium interior fittings to the three tier security cover to the specially chosen amenities in the compound. Every inch of Angelica is created to take your style of living up a notch. Or make it golden.



A home that mirrors your golden personality and luxurious lifestyle.

An elegant confluence of fine craftsmanship, sheer artistry and gorgeous interiors – that's your home at Angelica. Every inch is carefully designed, with the right combination of aesthetics and functionality, to give your lifestyle a golden nudge. So, every time you enter your dream home, be prepared to be surprised at the luxury oozing out of every corner.



The golden path to inner peace

Acres of green open spaces are dotted by wisdom trees, under which you can do yoga, meditate, connect with your soul or simply breathe. The stretches of greenery bring back the tranquil life that the city once enjoyed.





Gold of health



Your health is as important to us, as it is to you.

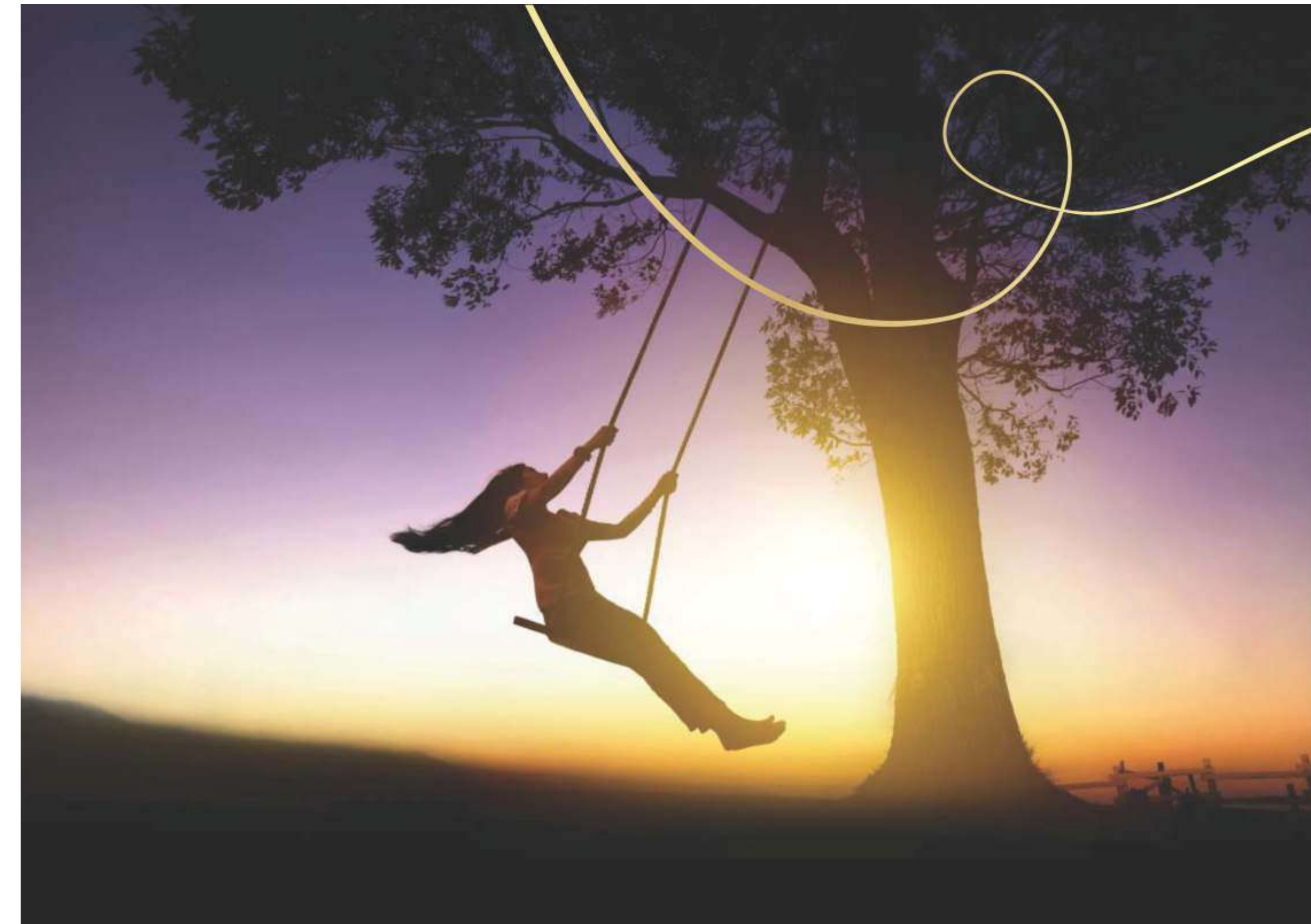
Angelica has many recreational activities lined up for the residents.

"Pink" is an understatement here as you'll be in the Gold of health.

Indoor facilities:

Badminton cum Banquet Hall, Squash Courts, Table Tennis, Billiards, Pool, Carrom, Air Hockey, TV Lounge, Library, Gym, Meditation Room, Foosball, Kid's Play Zone





The golden days of childhood
should be re-lived, not remembered.

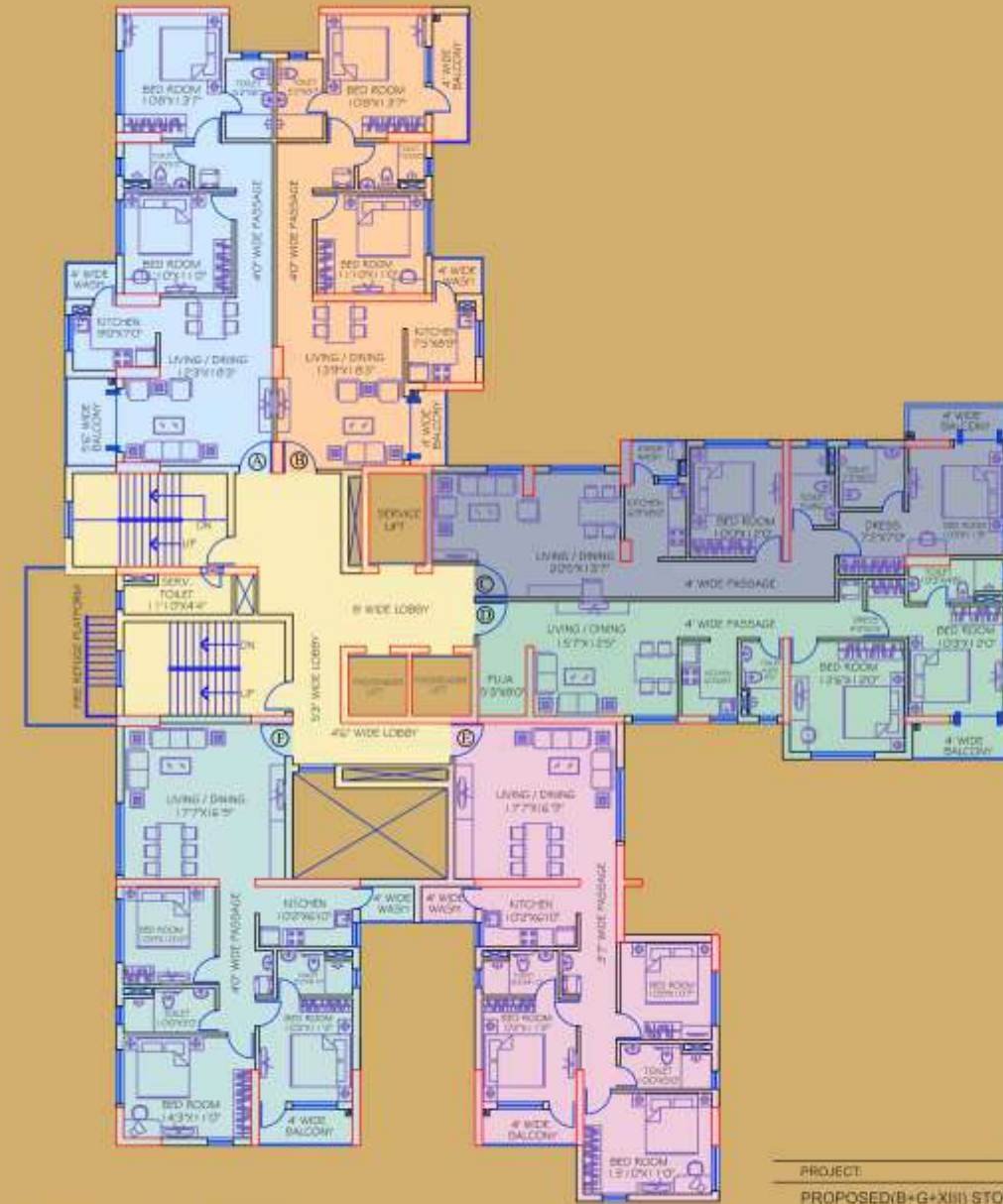
Angelica has something for you, as well as your child. Angelica comes with premium homes surrounded by acres of greenery and play areas. So, while your children enjoy fresh air, you connect with your inner child.

Outdoor facilities:

Tennis Court, Basket Ball Court, Football Arena,
Golf Putting Green, Cricket Arena, Jogging Track,
Trampoline, Children's Play Arena with Tree House, Swimming Pool



Tower angelica Wing - A



FLAT	TYPE	CARPET AREA (IN SQ.FT.)
A	2BHK	799
B	2BHK	791
C	2BHK	835
D	2BHK	815
E	3BHK	962
F	3BHK	942

TYPICAL FLOOR PLAN (1ST TO 23RD)
(BLOCK-1)

PROJECT	DATE	ARCHITECT
PROPOSED(B+G+XIII) STORED HOUSING COMPLEX, AT 54/10, DEBENDRA CHANDRA DEY ROAD, KOLKATA	04.01.21	AGRAWAL & AGRAWAL
	SCALE	BARODA KOLKATA
	1:200	

HIRA/P/KOL/2020/00778 | hira.wb.gov.in

Tower angelica Wing - B



FLAT	TYPE	CARPET AREA (IN SQ.FT.)
G	2BHK	799
H	2BHK	791
I	2BHK	835
J	2BHK	815
K	3BHK	962
L	3BHK	942

TYPICAL FLOOR PLAN (1ST TO 23RD)
(BLOCK-1)

PROJECT	DATE	ARCHITECT
PROPOSED(B+G+XIII) STORED HOUSING COMPLEX, AT 54/10, DEBENDRA CHANDRA DEY ROAD, KOLKATA	04.01.21	AGRAWAL & AGRAWAL
	SCALE	BARODA KOLKATA
	1:200	

HIRA/P/KOL/2020/00778 | hira.wb.gov.in

Specifications

Structure	RCC frame structure on pile foundation
Walls	Block work with Cement Plastering
Wall Finish	Interior: Plaster of Paris Exterior: Combination of textured paint/ Brush Finish
Ceiling	Plaster of Paris
Flooring	2'X2' Vitrified tiles in all rooms Toilets: Ceramic tiles Lift Lobby: Vitrified tiles
Kitchen:	Vitrified tiles, Piped gas supply, 24X7 Water supply, Hot/ Cold water line
Toilet	Standard ceramic tiles on the wall up to 7ft height. Premium quality bathroom fittings & sanitary ware, CP fittings of premium quality. Granite counter for basin. Concealed plumbing and pipe work. Provision for Hot/ Cold water point
Doors	Main door: Solid molded & polished Internal flush doors solid core with frames. Locks of superior quality. Hardware fitting of reputed brands.
Windows	Anodized aluminum windows
Electrical	Provisions for adequate light, fan and power points. Modular switches of superior brands. Overhead illuminated for compound and street lighting inside the complex. ISI approved brand of concealed wiring for electricity, telephone and television.
Facilities	Closed circuit TV at the ground level. Fully AC ground floor lobby. 24X7 Power Back – up for essentials services like lift, lobby, common area and general lighting. Automatic high speed elevators of superior make. Intercom facility & infrastructure for DTH TV service. In – house sewerage plant for entire complex. State-of-the-art fire fighting arrangement and extinguishers as required by law. Extensively landscaped gardens and driveways. 24 hours treated water supply.

active acres
Not just living.
Active living.

Ruchi REALTY
CREATING WORLDS OF JOY



MASTER PLAN



Locational Advantages of Active Acres

Landmarks	Distance
J W Marriott Hotel	1 km
ITC Sonar Hotel	1.5 kms
The Park Hotel (Proposed)	1.5 kms
Sealdah Station	2.5 kms
Apollo Gleneagles	4 kms
Fortis Hospital	4 kms
Calcutta International School	4 kms
Park Street	4 kms
Hyatt Hotel	4 kms
Mani Square (Mall)	4 kms
Ruby Hospital	4 kms
Heritage School	5 kms
La Martiniere School	5 kms
Mahadevi Birla World Academy	5 kms
Medica Super Speciality Hospital	6 kms
Airport	18 kms